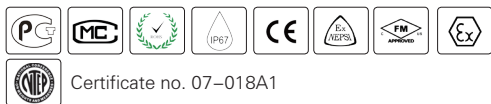


# B9C



- Stainless steel IP67 dual shear beam load cell
- High accuracy
- Suitable for truck scales and other heavy weighing devices
- Sealed construction

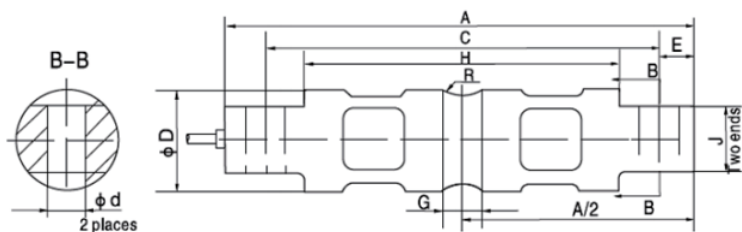
Available models		
Capacity	Accuracy	Full article description
5 Klb	N3	B9C-N3-5K-9B
10 Klb	N10	B9C-N10-10K-9B
15 Klb	N10	B9C-N10-15K-9B
20 Klb	N10	B9C-N10-20K-9B
30 Klb	N10	B9C-N10-30K-9B
40 Klb	N10	B9C-N10-40K-9B
50 Klb	N10	B9C-N10-50K-9B
60 Klb	N10	B9C-N10-60K-9B
75 Klb	N10	B9C-N10-75K-9B
90 Klb	N10	B9C-N10-90K-9B
100 Klb	N10	B9C-N10-100K-9B
150 Klb	N3	B9C-N3-150K-9B
200 Klb	N3	B9C-N3-200K-9B
250 Klb	N3	B9C-N3-250K-9B



## Specification

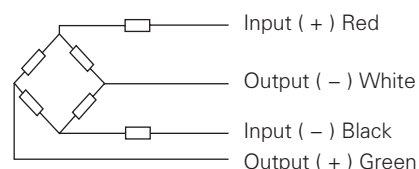
Accuracy class		N3	N10
Output sensitivity ( = FS )	mV/V	3.0 ± 0.003	
Maximum capacity ( E <sub>max</sub> )	klb	5, 150, 200, 250	10, 15, 20, 30, 40, 50, 60, 75, 90,100
Maximum number of load cell intervals ( nLC )		3000	
Ratio of minimum LC verification interval Y = E <sub>max</sub> / v <sub>min</sub>		7500	
Combined error	%FS	± 0.035	± 0.023
Safe overload	of E <sub>max</sub>	150 %	
Ultimate overload	of E <sub>max</sub>	300 %	
Zero balance	%FS	± 1.0	
Excitation, recommended voltage	V	5 ~ 12( DC )	
Excitation maximum	V	18( DC )	
Input resistance	Ω	700 ± 7	
Output resistance	Ω	703 ± 4	
Insulation resistance	MΩ	≥ 5000 ( 50VDC )	
Compensated temperature	°C	-10 ~ +40	
Operating temperature	°C	-35 ~ +65	
Storage temperature	°C	-40 ~ +70	
Element material		Stainless steel	
Ingress protection (according to EN 60529)		IP67	
ATEX classification (optional)		II1G Ex ia IIC T4	II1D Ex iaD 20 T73°C C II3G Ex nL IIC T4

## Dimensions in mm



Dimension Capacity	A	C	H	G	ΦD	J	Φd	R	E
5Klb, 10Klb	206.2 (8.12)	174.6 (6.88)	133.1 (5.24)	15.7 (0.62)	43.2 (1.7)	28.4 (1.12)	16.7 (0.66)	R12.7 (0.5)	15.7 (0.62)
15Klb, 20Klb	206.2 (8.12)	174.6 (6.88)	133.1 (5.24)	21.3 (0.84)	49.5 (1.95)	28.4 (1.12)	16.7 (0.66)	R12.7 (0.5)	15.7 (0.62)
30Klb, 75Klb	260.4 (10.25)	215.9 (8.5)	165.1 (6.5)	25.4 (1.0)	76.2 (3.0)	60.2 (2.37)	26.9 (1.06)	R25.4 (1.0)	22.4 (0.88)
90Klb, 100Klb	285.8 (11.25)	241.3 (9.5)	190.2 (7.49)	31.0 (1.22)	88.9 (3.5)	63.5 (2.5)	26.9 (1.06)	R38.1 (1.5)	22.4 (0.88)
150Klb	285.8 (11.25)	241.3 (9.5)	190.2 (7.49)	31.0 (1.22)	99.1 (3.9)	71.1 (2.80)	26.9 (1.06)	R38.1 (1.5)	22.4 (0.88)
200Klb,250Klb	408.9 (16.1)	330.2 (13.0)	254.0 (10.0)	31.7 (1.25)	136.6 (5.38)	116.8 (4.6)	39.6 (1.56)	R50.8 (2.0)	39.4 (1.55)

## Wiring



- Shielded, 4 conductor cable.
- Cable diameter for 5k – 20k: Φ5mm and for 30k – 250k: Φ8mm.
- Standard cable length: 9m.
- Shield not connected to element.