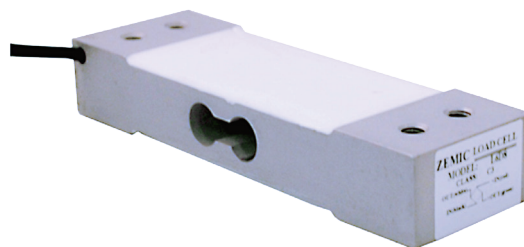


L6D8

- Aluminium-alloy IP65 single point load cell.
- Colourless anodized
- Suitable for pricing scales, bench scales, etc.
- Maximum platform size: 350 x 350 mm



test certificate no. D09-09.12

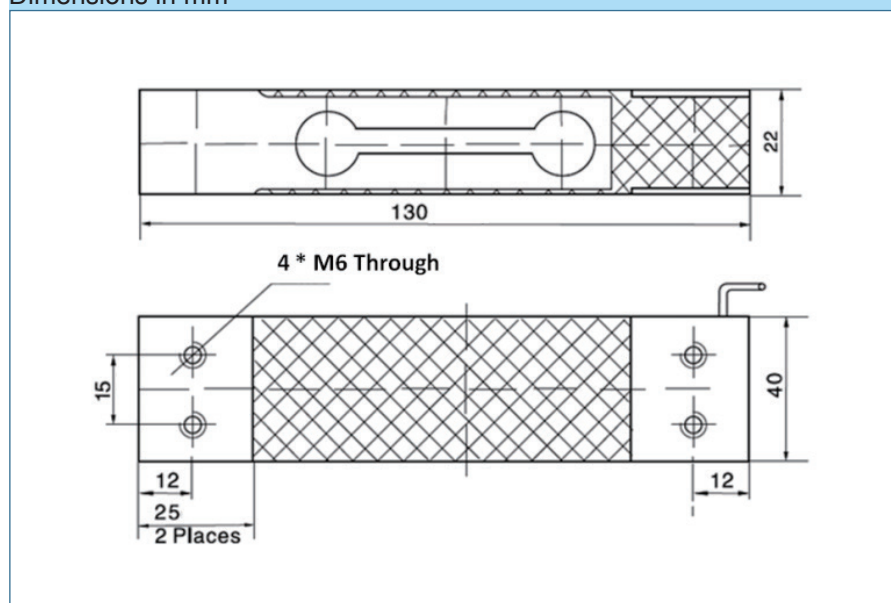
Available models

Capacity	Accuracy	Full article description
50 kg	C3/C4	L6D8-C3/C4-50kg-1.6B
75 kg	C3/C4	L6D8-C3/C4-75kg-1.6B
100 kg	C3/C4	L6D8-C3/C4-100kg-1.6B
150 kg	C3/C4	L6D8-C3/C4-150kg-1.6B
200 kg	C3/C4	L6D8-C3/C4-200kg-1.6B

Specification

Accuracy class		OIML R60 C3	OIML R60 C4
Output sensitivity (= FS)	mV/V	2.0 ± 0.2	
Maximum capacity (E _{max})	kg	50, 75, 100, 150, 200	
Maximum number of load cell intervals (nLC)		3000	4000
Ratio of minimum LC verification interval Y = E _{max} / V _{min}		10000	16000
Combined error	%FS	± 0.02	± 0.015
Minimum dead load	Of E _{max}	0%	
Safe overload	of E _{max}	120 %	
Ultimate overload	of E _{max}	150 %	
Zero balance	%FS	± 2.0	
Excitation, recommended voltage	V	5 ~ 12(DC)	
Excitation maximum	V	18(DC)	
Input resistance	Ω	406 ± 6	
Output resistance	Ω	350 ± 3	
Insulation resistance	MΩ	≥ 5000 (50VDC)	
Compensated temperature	°C	-10 ~ +40	
Operating temperature	°C	-35 ~ +65	
Storage temperature	°C	-40 ~ +70	
Element material		Aluminium	
Recommended torque on fixation	N.m	M6: 10	
Ingress protection (according to EN 60529)		IP65	

Dimensions in mm



Wiring

