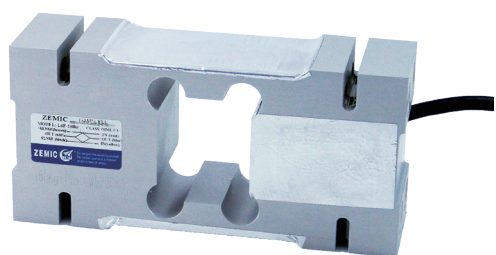


L6F



- Aluminium-alloy IP65 single point load cell.
- Colourless anodized
- Suitable for belt, pricing and platform scales
- Maximum platform size:
for 50kg–200kg: 600 x 600 mm
for 250kg–500kg: 600 x 800 mm
for 750kg–2t: 1200 x 1200 mm



OIML test certificate no. D09-06.10
C of C no R60/2000-CN1-06.01

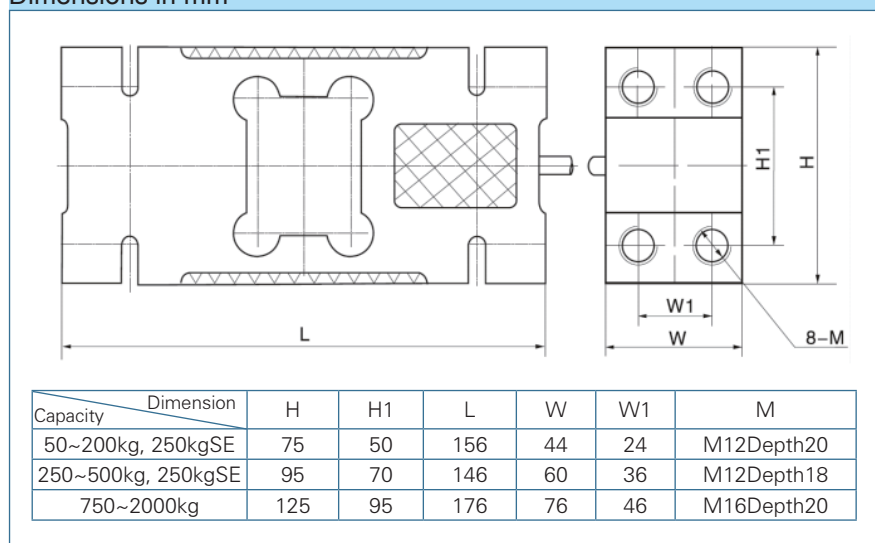
Available models

Capacity	Accuracy	Full article description
50 kg	C3	L6F-C3-50kg-3B6
100 kg	C3	L6F-C3-100kg-3B6
150 kg	C3	L6F-C3-150kg-3B6
200 kg	C3	L6F-C3-200kg-3B6
250 kg	C3	L6F-C3-250kg-3B6
500 kg	C3	L6F-C3-500kg-3B6
750 kg	C3	L6F-C3-750kg-3B6
1000 kg	C3	L6F-C3-1000kg-3B6
2000 kg	C3	L6F-C3-2000kg-3B6

Specification

Accuracy class		OIML R60 C3
Output sensitivity (= FS)	mV/V	2.0 ± 0.2
Maximum capacity (E _{max})	kg	50, 100, 150, 200, 250, 500, 750, 1000, 2000
Maximum number of load cell intervals (nLC)		3000
Ratio of minimum LC verification interval Y = E _{max} / v _{min}		7000
Combined error	%FS	± 0.02
Minimum dead load	kg	0%
Safe overload	of E _{max}	120 %
Ultimate overload	of E _{max}	150 %
Zero balance	%FS	± 2.0
Excitation, recommended voltage	V	5 ~ 12(DC)
Excitation maximum	V	18(DC)
Input resistance	Ω	406 ± 6
Output resistance	Ω	350 ± 3
Insulation resistance	MΩ	≥ 5000 (50VDC)
Compensated temperature	°C	-10 ~ +40
Operating temperature	°C	-35 ~ +65
Storage temperature	°C	-40 ~ +70
Element material		Aluminium
Recommended torque on fixation	N.m	M12: 100 M16: 160
Ingress protection (according to EN 60529)		IP65

Dimensions in mm



Wiring

